

# Smart Back

LUXY R&D



[gordonisgood.com](http://gordonisgood.com)  
est. 1967

g.



Sometimes the smart choice  
is the easy choice.  
Sometimes we just know.



Synchron mechanism, height adjustable, flexible back with adjustable lumbar support, 2D adjustable arms, sinuous, thin profile. It's Smart.

# Smart Back

BY R&D LUXY



**5290-24B-LGRY**  
Smart Back High Back Black Base Dark Gray Fabric

**5290-24B-BLUE**  
Smart Back Mid Back White Base Light Gray Fabric

**Dimensions:**

26.75” W x 26.75” D x 39.75 - 45.00” H

Arm Ht 25.50” - 31.00”

Seat Ht 17.25” - 22.75”

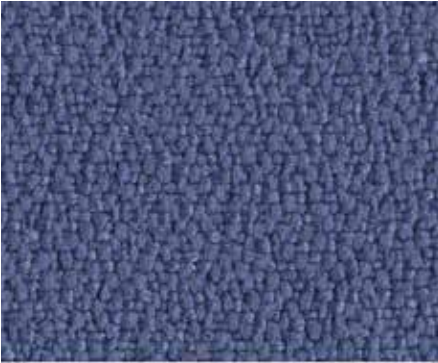


**Frame:**

Available with black fiberglass reinforced, molded nylon base, matching casters, synchron mechanism, height adjustment, sliding seat plate, and 2D adjustable arms (up and down and width). The synchron mechanism allows the seat and back to move independently at a prescribed ratio, encouraging blood flow, and providing excellent passive ergonomic support. Back flexes to follow body movement. Lumbar support is height adjustable.

**Upholstery Options:**

Fully upholstered seat offered in #322 blue and #325 light gray fabric options. Fabric is flame retardant and recycleable. Made of 100% Polyester FR, Trevira CS.



322



325

**Overview:**

Smart Back delivers intelligent, flexible solutions for the contemporary workplace. It’s sinuous backrest has a sliding, height adjustabl lumbar support and flexing back that moves with the user.

Softly upholstered and engineered for intuitive adjustments, SmartOffice comfortably cradles all body types thanks to Synchro-Tilt mechanisms and five locking positions, offering total comfort hour to hour.



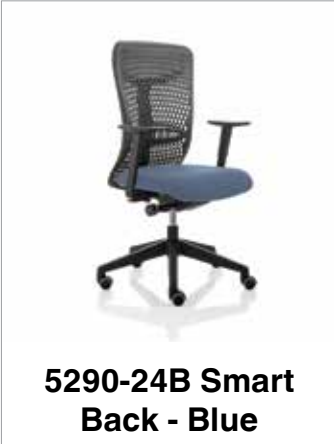
**Environmental Considerations:**

Smart Back is produced in compliance with ISO 9001 and 14001 standards, recyclable after use and has been fully certified by Greenguard.

At Gordon we strive to incorporate best practices with regard to environmental sustainability. We encourage clients to reference our sustainability overview at: [www.gordonisgood.com/sustainability](http://www.gordonisgood.com/sustainability).







5290-24B Smart Back - Blue



5290-24B Smart Back - Light Gray



Pricing to the right is published pricing followed by sale pricing on our website.

Take advantage of these deep discounts and get durable, well crafted solutions for less than half our published pricing!

Retail Pricing:	
5290-24B:	\$ 1144 list
eCommerce Sale:	
5320-96B:	\$ 595 net

Custom fabric and frame colors available on an 8-12 week lead time. Call for details.

